

KONICA MINOLTA



GET IT DONE:

print a page per second, scan in color, copy, fax and finish.



COUNT **ON** KONICA MINOLTA
bizhub 652/552



An essential component of a total document solution.

Konica Minolta has led the industry in high-speed digital output. With print/copy output up to 65 ppm for the bizhub 652, 55 ppm for the bizhub 552, and color scanning at up to 78 originals per minute for both models, these two bizhub MFPs are perfect B&W complements to your total document solution – integrating cost-effective B&W output, seamless networking, enhanced security and modular options for finishing and fax.

For high-volume document traffic in legal, healthcare, education, government and other applications, the bizhub 652 and 552 provide plenty of productivity advantages. Built-in color scanning lets you move information to multiple destinations: Email, FTP server, SMB. Twain scanning enables you to import information directly to desktop PCs. Scan-to-Me and Scan-to-Home provide one-touch convenience to bring documents directly into your workflow. And Scan-to-User Box lets you share information, perform routing functions and adjust document settings as you scan.

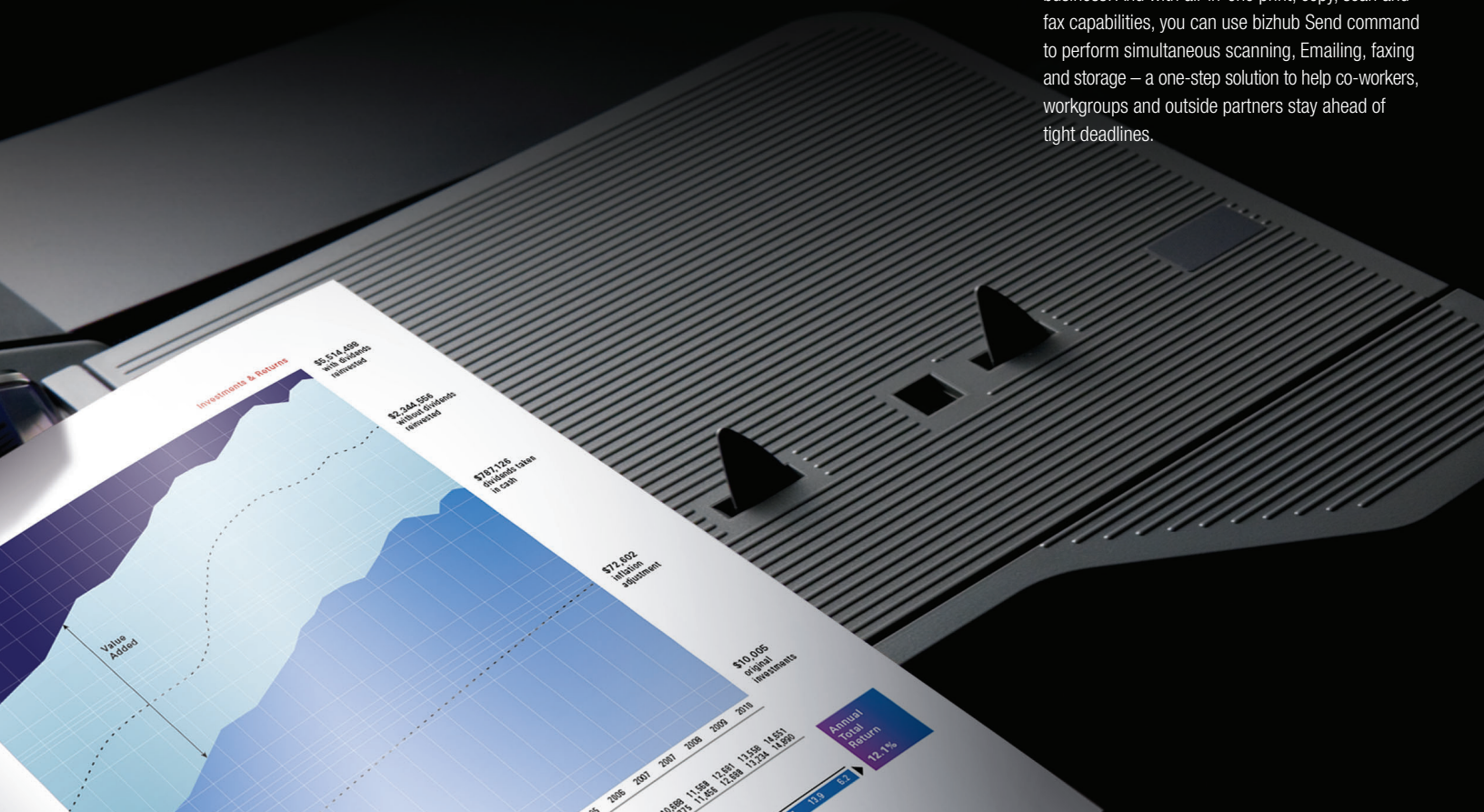
To speed network traffic, Gigabit Ethernet provides simple connections. IPv6 protocol increases IP addressing power in large networks. And IEEE 802.1x networking with Extensible Authentication Protocol (EAP) provides an authentication mechanism that allows integration into either LAN or WLAN environments.

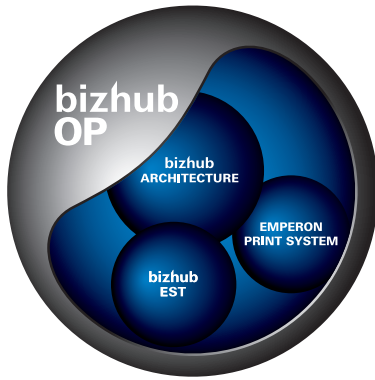
The bizhub 652 and 552 also provide standard 250 GB Hard Disk Drives, for high-capacity on-board document storage at the hub of your business. And with all-in-one print, copy, scan and fax capabilities, you can use bizhub Send command to perform simultaneous scanning, Emailing, faxing and storage – a one-step solution to help co-workers, workgroups and outside partners stay ahead of tight deadlines.

FAST THROUGHPUT

that can save you money as it speeds your workflow.

GETTING THE JOB DONE FASTER AND MORE COST-EFFECTIVELY, IN A NETWORKED SOLUTION COMBINING COLOR SCANNING WITH ECONOMICAL EVERYDAY B&W PRINTING – THAT'S THE BENEFIT OF BIZHUB 652 AND 552. HIGH-SPEED B&W OUTPUT OF MORE THAN A PAGE PER SECOND. COLOR SCANNING AT UP TO 78 ORIGINALS PER MINUTE. ONE-STEP DOCUMENT DISTRIBUTION. POWERFUL FINISHING OPTIONS. AND ALL-IN-ONE PRODUCTIVITY THAT INCORPORATES MANY OF THE ADVANTAGES OF KONICA MINOLTA'S AWARD-WINNING C652 SERIES OF COLOR MFPs.





Technology innovations for 21st-century workflow.

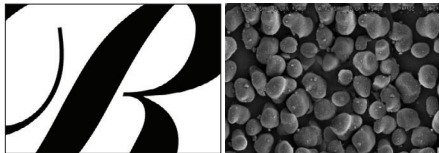
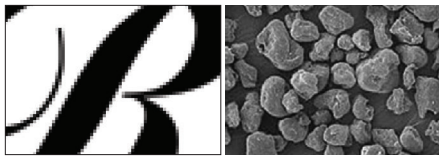
Leading the industry means finding new ways to get the job done better – and inside the bizhub 652 and 552, a host of Konica Minolta innovations help you work faster and smarter.

Our exclusive bizhub OP (Open Platform) design incorporates multiple benefits – including bizhub Architecture, consolidating major functions on uniform modules for fast internal processing with a consistent control interface. The unique Emperon® Print System adds built-in print control, PCL6/PS3 emulation and native XPS functionality to handle print files in any format. And the latest upgrade in bizhub Extended Solution Technology (bEST) gives you seamless interface with the specialized software your business needs for print management, variable printing, account tracking, cost recovery and more.

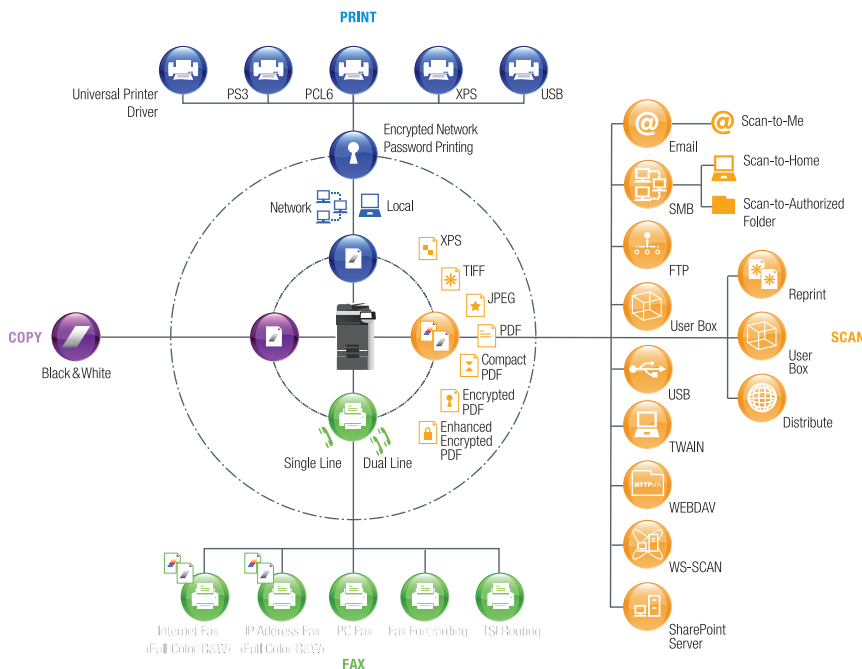
To improve your monochrome image, Simitri® HD toner utilizes smaller, more uniform particles that reproduce ultra-fine detail. Simitri was the industry's first polymerized toner, now in its 10th Anniversary year – and right from the start, Simitri toner used biomass plant-based materials to reduce environmental impact.

Your documents will also benefit from 1800 dpi equivalent x 600 dpi resolution – with outline PDF function that smoothes edges, so graphics and photos look more realistic, graphics have sharper accuracy and text is more legible.

Pulverized



Simitri
with Biomass

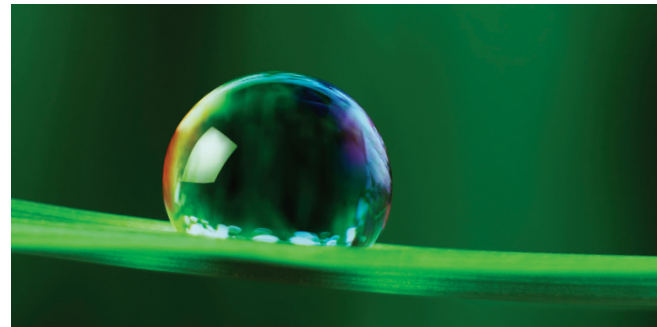


High-resolution imaging in simple, hi-tech design.

Sleek dark styling and compact cabinetry will fit in and look great anywhere in your office, so you can place the productivity advantages of the bizhub 652/552 at the center of your workflow – where everyone can benefit from their fast output and quick-scan features.

A large 8.5" color touch-screen makes operation simple for first-time and walk-up users. Thumbnail preview lets you check documents before you print, saving time and cutting down on costly reprinting. Animated screens guide you and make menus more user-friendly. And our award-winning MyTab™ print utility lets each individual set up customized print settings for quick recall.

The InfoLine™ function displays operating status at a glance, even from across the room. For Section 508 compliance, a tilting control panel accommodates wheelchair-bound employees. Blue LED function key lights are easier to see. And paper drawers slide smoothly with just a light pull.



Clean Planet Recycling: our latest green innovation.

In addition to the cleaner biomass technology developed for Simitri HD toner, Konica Minolta has led the way in a wide range of environmental initiatives.

Our latest achievement is Clean Planet Recycling – the industry's first cost-free program to recycle consumables for all Konica Minolta models. With postage paid UPS labels ready to print from our website recycling consumables has never been easier.

In addition to saving the planet, Konica Minolta also saves you money – with higher toner yield to reduce total cost of ownership and energy-saving modes that minimize power consumption. In manufacturing, we've consistently reduced emissions and minimized pollutants. And our Eco Vision 2050 program is committed to reducing CO₂ emissions by 80% over 2005 levels – helping cut down on greenhouse gases that may contribute to global warming.



PRINTING AND FINISHING

to produce a wider range of superior documents in-house.

WITH THE BIZHUB 652 AND 552, YOU CAN PRINT AND FINISH CORPORATE COMMUNICATIONS, PRESENTATIONS, REPORTS, USER MANUALS, VARIABLE-DATA MAILINGS, BUSINESS FORMS AND MORE. YOU'LL GET THE JOB DONE FASTER, MAINTAIN CONTROL OF SENSITIVE INFORMATION, AND REVISE AND REPRINT MORE QUICKLY AND COST-EFFECTIVELY. IN HEALTHCARE, LEGAL AND EDUCATIONAL APPLICATIONS, GOVERNMENT OFFICES, CORPORATE CRDS, PRINT-FOR-PAY AND LIGHT PRODUCTION ENVIRONMENTS, THE BIZHUB 652 AND 552 CAN DO IT ALL.

Enhanced features for print/copy/scan productivity.

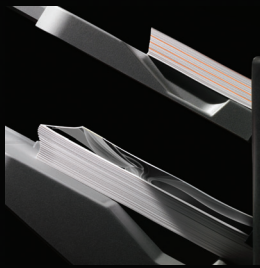
The extended feature set built into the bizhub 652 and 552 adds real value to your workflow. The latest Windows drivers handle your printing needs with ease. Universal Printer Drivers provide a common print control interface with standard commands, making print control quick and intuitive right from the start, including auto detection and configuration of networked devices for easy IT integration.

Maximum paper capacity of 6,650 sheets gives you more production power with less operator intervention. You can load up to 12" x 18" paper to print oversized graphics and spreadsheets, two-page spreads, even B&W proofs with crop marks and contrast scales in the margins. The bizhub 652 and 552 can also handle heavy stock, with 100% auto duplexing at rated engine speed, producing two-sided prints and copies without slowing down your output.

Proof copy/print lets you check output before making a full print run. You can even print and scan to and from USB thumb drives, with convenient front input connector — importing and exporting User Box files via USB memory. And you can print wirelessly with the EK-605 Bluetooth® option.

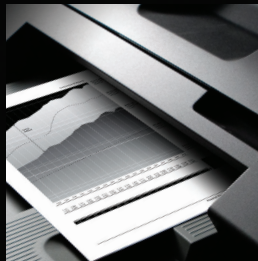
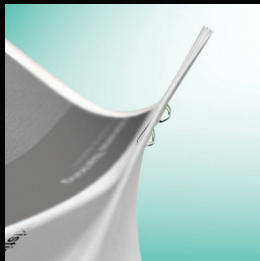
To manage all your document traffic from one convenient location, Internet Fax and IP Address Fax capabilities are built-in. You can also add an optional Super G3 Fax Kit with accelerated transmission and reception features and optional dual line to double your fax handling capacity.





AVAILABLE OPTIONS:

- FK-502 Super G3 Fax Kit
- FS-526 Finisher (100 sheets)
- FS-527 Finisher (50 sheets)
- JS-602 Job Separator for FS-526
- JS-603 Job Separator for FS-527
- LU-204 LCT (2,500 sheets)
- LU-301 LCT (3,000 sheets)
- MK-720 Fax Mount Kit for FK-502 or SA-502
- OT-503 Output Tray Kit
- PI-505 Post Inserter
- PK-516 Punch Kit for FS-526
- PK-517 Punch Kit for FS-527
- SD-508 Saddle Stitcher Kit for FS-526
- SD-509 Saddle Stitcher Kit for FS-527
- WT-506 Working Table
- ZU-606 Z-Folding Unit



Powerful options for producing more in-house.

Booklets, insurance reports, patient records, billing inserts, variable data mailings – what kind of documents does your business need most often? And can you produce them in-house, on-demand, to cut costs and save time?

The bizhub 652 and 552 can satisfy your in-house document needs with modular finishing options. Both models accept a powerful Staple Finisher (FS-526) with 100-sheet multi-position stapling and custom sorting and grouping. Using the FS-526, you can expand your finishing capabilities with a Saddle Stitcher Kit (SD-508) for creating 80-page (20-sheet) booklets, a Punch Kit (PK-516) for 2/3-hole punching at top or side, a Z-Fold Unit (ZU-606) for Z-Folding, and a Post-Insertor (PI-505) to add pre-printed covers or chapter dividers. There's even a Job Separator Tray (JS-602) option that adds a third tray to sort print, copy and fax output.

For greater versatility, both models also accept a slim and compact Floor Finisher option (FS-527), giving you a right-size choice of finishing solutions to suit specific in-house production needs. The FS-527 provides 50-sheet stapling and enables you to add a Hole-Punch Kit (PK-517) for 2/3-hole punching at side or top and a Saddle Stitcher Kit (SD-509) for booklets up to 60 pages (15 sheets). An optional Job Separator Tray (JS-603) acts as a third output tray to separate prints, copies and faxes. And with optional FS-527 Floor Finisher or optional OT-503 Output Tray installed, you can produce text signs and monochrome banners up to 11-3/4" x 47-1/4".



SEAMLESS NETWORKING

with enhanced security to safeguard valuable information.

DIGITAL DOCUMENT PRODUCTION HAS EVOLVED NEW WAYS OF CREATING AND DISTRIBUTING INFORMATION – AND DRIVEN NEW DEMANDS FOR NETWORKING, SOFTWARE AND SECURITY. THE BIZHUB 652 AND 552 ANSWER THESE DEMANDS WITH POWERFUL SOFTWARE CAPABILITIES AND SECURITY ENHANCEMENTS THAT GIVE YOU GREATER CONTROL AND SUPERIOR SAFEGUARDS. WITH BIZHUB, YOU CAN COUNT ON NETWORKED SOLUTIONS THAT GET THE JOB DONE – WITH WAYS TO MAKE YOU MORE COMPETITIVE IN THE 21ST CENTURY.

Comprehensive security to protect sensitive information.

Konica Minolta leads the industry in protecting sensitive information – and the bizhub 652 and 552 meet ISO 15408 Common Criteria classification with enhanced security features such as bizhub Secure Print with password security locks. Customized User Authentication for printing, scanning, faxing and User Box. Encrypted PDF workflow to protect information passing from PC to network. And with Audit log/Image log management to track usage and control access to your bizhub device.

IP Filtering lets you register the IP addresses of PCs on your network. SSL/TLS Encryption protects data during exchange between the MFP and network servers. And S/MIME Encryption safeguards your Email exchanges.

You can also add state-of-the-art security options for your documents and devices, including an HID Proximity Card Authentication Kit (AU-201H) for secure access to bizhub MFP functions and a Biometric Authentication Kit (AU-102) for quick “ID and print” operation using safe, secure finger-vein scans to identify users. A Copy Guard kit (SC-507) provides password-protected copy functionality. An HDD Lock function applies password protection to your hard disk drive. Job Erase function automatically overwrites your HDD up to three times – and HDD sanitizing overwrites data in 8 different modes, meeting strict government standards when devices are re-purposed or taken out of service.





i-Option kits to enhance workflow and simplify operation.

Konica Minolta's i-Option kits provide additional capabilities that make your in-house production system more powerful, flexible and secure.

The LK-101v.2 provides an Image Panel interface to manage User Box files, an enhanced AJAX-capable Web Browser for faster Internet Access, and Scan-to-Sharepoint convenience for quick document distribution. The LK-102 allows you to create PDF documents with government-level AES 128-bit encryption. And the LK-105 lets you quickly search PDF files to locate text and data.

IT power with interlocking PageScope® software solutions.

With networking, security and workflow advantages, PageScope software makes your bizhub 652 and 552 even more powerful.

PageScope Enterprise Suite v2.0 combines four software modules in a server-based solution for managed printing, account tracking, user authentication and customized user interface.

PageScope Web Connection and PageScope Net Care Device Manager enable individual users and IT administrators to manage multiple devices more easily. PageScope Print Status Notifier provides notification when your network print job or network fax has been completed. And PageScope Data Administrator™ handles addresses, passwords, and accounts more quickly and efficiently.



MyPrint Manager

PageScope MyPrint Manager holds documents in a secure print queue until users authenticate themselves at any supported Konica Minolta MFP on the print network.



Account Manager

PageScope Account Manager tracks device usage based on individual log-in – registering print/copy/scan/fax activity, creating reports, setting limits, allocating costs.



Authentication Manager

PageScope Authentication Manager provides password-protected log-in by user name, IC Card or Biometric authentication at each MFP, synchronizes to Active Directory, and automatically adds new users as they join your team.



MyPanel Manager

PageScope MyPanel Manager allows individuals to customize an interface that appears at each MFP and disappears when users log out.



Konica Minolta: #1 in customer loyalty.

With all these features, functions and capabilities, the bizhub 652 and 552 have one advantage that's even more important: the satisfaction of our customers. Konica Minolta was recognized by Brand Keys for a third consecutive year as the #1 Brand for Customer Loyalty in the MFP Office Copier Market. We are at your service with over 37,000 worldwide employees, cutting-edge research programs in digital and optical technology, and the industry's most complete line of document imaging solutions from desktop to print shop. As long as you count on Konica Minolta, you've made the right decision.

COUNT ON KONICA MINOLTA

For more information, please visit:
www.CountOnKonicaMinolta.com

bizhub 652



bizhub 552



SPECIFICATIONS		
Type/Process/Toner Type	Printer/Copier/Full-Color Scanner with Stationary Platen; Tandem Process; Simitri® HD Toner with Biomass	
Print/Copy Speed	B&W: 65 ppm (letter, portrait)	B&W: 55 ppm (letter, portrait)
Monthly Duty Cycle (Pages)	190,000	150,000
COPY		
Warm-up Time/First Copy Time	Less than 30 seconds/Less than 3.8 seconds	Less than 30 seconds/Less than 4.3 seconds
Copy Resolution/Quantity	1800 dpi equivalent x 600 dpi/1-9,999	
Magnification	Zoom range: 25% - 400%, 0.1% increments, Preset reduction: 79%, 73%, 65%, 50%, Preset enlargement: 121%, 129%, 155%, 200%	
Copy Exposure Modes	Text (legible text), Text/Photo (clear text and halftones), Photo (optimized for gradations), Dot Matrix (dot matrix or pencil originals), Copied Paper	
PRINT – Emperon Print System with bizhub Extended Solution Technology / Open API		
Processor/Memory/Hard Disk Drive	1 GHz (MC 7448)/2 GB RAM (shared copier memory)/250 GB (shared copier HDD)	
Print Resolution/Gradation	1800 dpi equivalent x 600 dpi/256 shades per pixel	
Interface	10 Base-T/100 Base-TX/1000 Base-T, USB 1.1 Host Port, USB 2.0	
Page Description Language/Fonts	PCL5e/c, PCL6 (XL v.3.0) Emulation, PS3 (v.3016) Emulation, XPS v.2.1.4.0 (XML Paper Specification)/PCL: 80 fonts, PostScript 3 Emulation: 137 fonts	
Print Drivers	PCL6: Windows 2000 Professional, Windows XP Home/Professional (x32, x64), Windows Vista (x32, x64), Windows 7 (x32, x64), Windows Server 2003 (x32, x64), Windows Server 2003 R2, Windows Server 2008 (x32, x64), Windows Server 2008 R2; PS3: Windows 2000 Professional, Windows XP Home/Professional (x32, x64), Windows Vista (x32, x64), Windows 7 (x32, x64), Windows Server 2003 (x32, x64), Windows Server 2003 R2, Windows Server 2008 (x32, x64), Windows Server 2008 R2; Universal PS3 and PCL: Windows 2000, Windows XP, Windows Vista, Windows 7 (x32, x64), Windows Server 2003, Windows Server 2008 (x32, x64); XPS: Windows Vista (x32, x64), Windows 7 (x32, x64), Windows Server 2008 (x32, x64), Windows Server 2008 R2; Mac: OS 9.2 (PPD file), OS X 10.2, 10.3, 10.4, Intel-based: 10.4 (print driver), 10.5, 10.6	
Protocols	TCP/IP, IPX/SPX, AppleTalk (EtherTalk), LPR, SMB, LPD, Netware (4.x, 5, 6), Pserver, Nprinter, NDPS, IPP 1.1, SMTP, POP3, LDAP, SSL/TLS, SNMP, HTTP/HTTPS, IPv4, IPv6, DPWS (WSD)	
COPY / PRINT FUNCTIONS		
Copy/Print	Account Track (1,000 accounts), Administration Mode, Auto Duplex, Auto Trapping, Auto Tray Switching, Bi-Directional Communication, Black Over Print, Card Shot, Copy Guard, Copy Modes (Simplex/Duplex, 2-in-1, 4-in-1, 8-in-1, Book, Booklet, Booklet + Bind), Cover Mode, Creative Functions (Mirror Image, XY Zoom, Image Center, Image Adjustment, Neg./Pos. Reverse, Image Repeat), Encrypted Network Password Printing, Energy Save Mode, Enlarge Display, Erase Mode (Border, Frame, Edge), Finishing (Group, Sort, Staple, Punch, Half-Fold, Center Staple and Fold, Tri-Fold), Form Overlay, Glossy Mode, HDD Encryption, HDD Job Overwrite, HDD Sanitizing, Image Adjustments (Contrast, Copy Density, Sharpness), Image Preview (Job Finishing, Image Display, Engine Configuration Display), Interrupt, Job List, Job Reserve, Job Skip, LDAP, Mixplex, Mix-Media, MyTab, Non-Image Area Erase, OHP Interleaving, Password Copy, Program/Recall Jobs, Paper Type Selection (Normal, Thick 1/1+, Thick 2, Thick 3, Thick 4), Print Modes (Simplex/Duplex, 2-in-1, 4-in-1, 6-in-1, 9-in-1, 16-in-1, Booklet, Booklet + Bind), Print from USB, Proof Copy, Secure Printing, Separate Scan, Text Enhancement, User Authentication (Up to 20 Authentication Servers) (Synchronize w/Account Track), User Box Function, Utility (Meter Count, Environment Setting, Default Setting, One-Touch Setting, Check Consumables Life), Watermark, Zoom Selection	
SCAN		
Scan Speed/Scan Resolution	Full Color: 78 opm (@ 300 dpi, letter), 55 opm (@ 600 dpi, letter), B&W: 78 opm (@ 300 dpi, letter), 65 opm (@ 600 dpi, letter) / 200 dpi, 300 dpi, 400 dpi, 600 dpi	
Scan File Formats	TIFF, PDF, Compact PDF, JPEG, XPS, Compact XPS	
Scan Functions	Scan-to-Email, Scan-to-FTP, Scan-to-HDD (Scan-to-User Box), Scan-to-Me/Scan-to-Home, Scan-to-SMB (Scan-to-Desktop), Scan-to-WebDAV, Network TWAIN, WS-Scan, Color Internet Fax, Color Modes & Functions (Auto Color/Full Color, Grayscale, Black Mode)	
• SA-502 Scan Accelerator Kit	Accelerates scan conversion process	
• FAX		
• FK-502 Fax Board	Super G3 compatibility, MH, MR, MMR, JBIG data compression, 33.6 kbps modem speed	
• MK-720 Fax Mount Kit	Required for FK-502 installation	
• Fax Transmission Speed	Less than 3 seconds/page (JBIG, standard resolution)	
• Fax Line / Mode	PSTN, PBX, G3	
• Fax Exposure Mode	Text, Text/Photo, Photo, Dot Matrix	
• Fax Features	Autodialing (2,000 one-touches), Auto Memory Reception, Auto Reduction Printing, Broadcasting (maximum 605 locations), Bulletin Board, Duplex Transmission/Reception, Exposure Mode, Group Dialing (up to 500 one-touches per group), Image Rotation Transmission/Reception, Mailbox Transmission/Reception, Memory/Quick Dial, Overseas Transmission, Password Transmission/Reception, PC-Fax, Polling Transmission/Reception, Priority Transmission, Print Setting or Overnight Reception, Program Dialing (400 programs), Redial, Relay Broadcasting, Relay Transmission, Remote Reception, Timer Transmission, TSI Routing	
PAPER INPUT		
Reversing Auto Document Feeder	78 opm, Capacity: 100 Sheets, Paper Size: 5.5" x 8.5" to 11" x 17", Paper Weight: Single-sided: 9.25 lb. to 55.75 lb. bond, Double Sided or mixed: 13.25 lb. to 34 lb. bond	
Original Size	Up to 11" x 17"	
Tray 1 & Tray 2	500-sheet (universal cassette)/5.5" x 8.5" to 12" x 18"/17 lb. bond to 140 lb. index	
Tray 3	1,500-sheet (fixed cassette)/8.5" x 11", 5.5" x 8.5", 4" x 6"/17 lb. bond to 140 lb. index	
Tray 4	1,000-sheet (fixed cassette)/8.5" x 11", 5.5" x 8.5", 4" x 6"/17 lb. bond to 140 lb. index	
Bypass Tray	150-sheet bypass/4" x 6" to 12" x 18", 8" x 13"/17 lb. bond to 100 lb. cover or up to 300 gsm	
• LU-204 Large Capacity Unit	2,500-sheets/8.5" x 11", 8.5" x 14", 11" x 17", 12" x 18"/17 lb. bond to 140 lb. index	
• LU-301 Large Capacity Unit	3,000-sheets/8.5" x 11"/17 lb. bond to 140 lb. index	
Maximum Paper Capacity	6,650 sheets (total, with options)	
APPLICATIONS		
Network & Device Management	PageScope Data Administrator, Driver Packaging Utility, HDD Back-Up Utility, Log Management Utility	
User Tools	PageScope Web Connection, PageScope Direct Print, PageScope Box Operator, PageScope Print Status Notifier, Font Management Utility, Copy Protect Utility, Print Utility for Unix	
Management Tools	bizhub vCare support	
• PageScope Enterprise Suite:	PageScope Account Manager, PageScope Authentication Manager, PageScope MyPrint Manager, PageScope MyPanel Manager, PageScope Net Care Device Manager (standard)	
• ADDITIONAL OPTIONS		
• Authentication Devices	AU-102 Biometric Authentication Unit, AU-201H HID Card Authentication Unit, AU-202H HID iClass Card Authentication Unit, AU-204H Magnetic Stripe Card Reader, AU-211P CAC/PIV Solution*, SC-507 Copy Guard Kit, WT-506 Working Table to support Authentication Devices	
• External Keyboard	KH-101 Keyboard Mount Kit for External Keyboard, EK-604 USB Interface for External Keyboard, EK-605 USB Interface for External Keyboard and Bluetooth Support	
• i-Option	LK-101 v2 i-Option, LK-102 i-Option, LK-105 i-Option, UK-203 i-Option Memory Upgrade Kit	
• Finishing	FS-526 100-Sheet Staple Finisher, FS-527 Floor Finisher, JS-602 Job Separator Tray (FS-526), JS-603 Job Separator Tray (FS-527), OT-503 Output Tray (Exit Tray), PI-505 Post Insertor (FS-526), PK-516 Punch Kit (FS-526), PK-517 Punch Kit (FS-527), SD-508 Saddle Stitcher Kit (FS-526), SD-509 Saddle Stitcher Kit (FS-527), Spare TX Marker Stamp 2, SP-501 Fax Stamp Unit, ZU-606 Z-Fold Unit (FS-526)	
POWER & DIMENSIONS		
Power	Requirement: 120V, 60Hz/Consumption: Less than 2,100 W	Requirement: 120V, 60Hz/Consumption: Less than 2,000 W
TEC Value (kWh)	6.98 kWh	5.82 kWh
Dimensions (W x D x H) / Weight	25.6" x 34.6" (30.5" without control panel) x 45.5" (includes RADF)/454.15 lb.	

• OPTIONAL • STANDARD For more detailed specifications see the bizhub 652/552 Specification and Install Guide.

* Please contact your local Government Account Manager for details



KONICA MINOLTA

KONICA MINOLTA BUSINESS SOLUTIONS U.S.A., INC.

100 Williams Drive
Ramsey, NJ 07446

www.CountOnKonicaMinolta.com
www.kmbis.konicaminolta.us

bizhub



bizhub vCare



COUNT ON KONICA MINOLTA

© 2010 KONICA MINOLTA BUSINESS SOLUTIONS U.S.A., INC. All rights reserved. Reproduction in whole or in part without written permission is prohibited. Konica Minolta is a trademark of KONICA MINOLTA HOLDINGS, INC. bizhub, Emperon, and PageScope are registered trademarks of KONICA MINOLTA BUSINESS TECHNOLOGIES, INC. Simitri is a registered trademark of KONICA MINOLTA BUSINESS SOLUTIONS. All other brands and product names are registered trademarks or trademarks of their respective owners. Design & specifications are subject to change without notice. Some functions may require options, which may or may not be available at time of launch.

Item #: 652BRO
2/11